

The Madison H

1928 SQ FT

8231-217 St. NW



- Stunning 2 Story, 3 Bedroom & 2 ½ Bath Single Family Home with 1928 SqFt.
- 9' Ceiling, Hardwood and Tile throughout the Main Floor
- Upgraded Lighting in the Kitchen includes Pot & Pendant Lights
- Beautiful Kohler upgraded Faucets in Kitchen, ½ Bath, Main Bath, and Ensuite
- Kitchen Fully Equipped with 41" Upper Maple Cabinets and Pot & Pan Drawer
- Stylish Quartz Kitchen Counters W/ Undermount Sink
- Tile Surround Fireplace in Great Room with Media Conduit
- Main Floor Laundry
- Paint Grade Railing with Metal Spindles
- Split Staircase, Separates the Bonus Room from the Bedrooms
- Master Bedroom includes Walk-in Closet, 4 pc Ensuite with Corner Tub & Double Sinks
- Christmas Light switch
- Convenient Keyless entry for the OH Garage door
- 50 US Gallon Hot Water Tank
- Triple Pane with low E Argon Filled Windows
- Precast Cement Front Steps
- Astonishing Exterior Elevation with Stone Accents on Garage and Pillar

Rosenthal Showhome

8236 217 Street NW, Edmonton

780.705.3765

rosenthalsales@bedrockhomes.ca

Job # ROS-0-034170 Lot 5, Block 1, Plan 122-5087

Notes:

bedrockhomes.ca

VISIT US AT ANY OF OUR SHOWHOMES!

Monday - Thursday 3-8pm, Weekends & Holidays 12-5PM



The Madison H

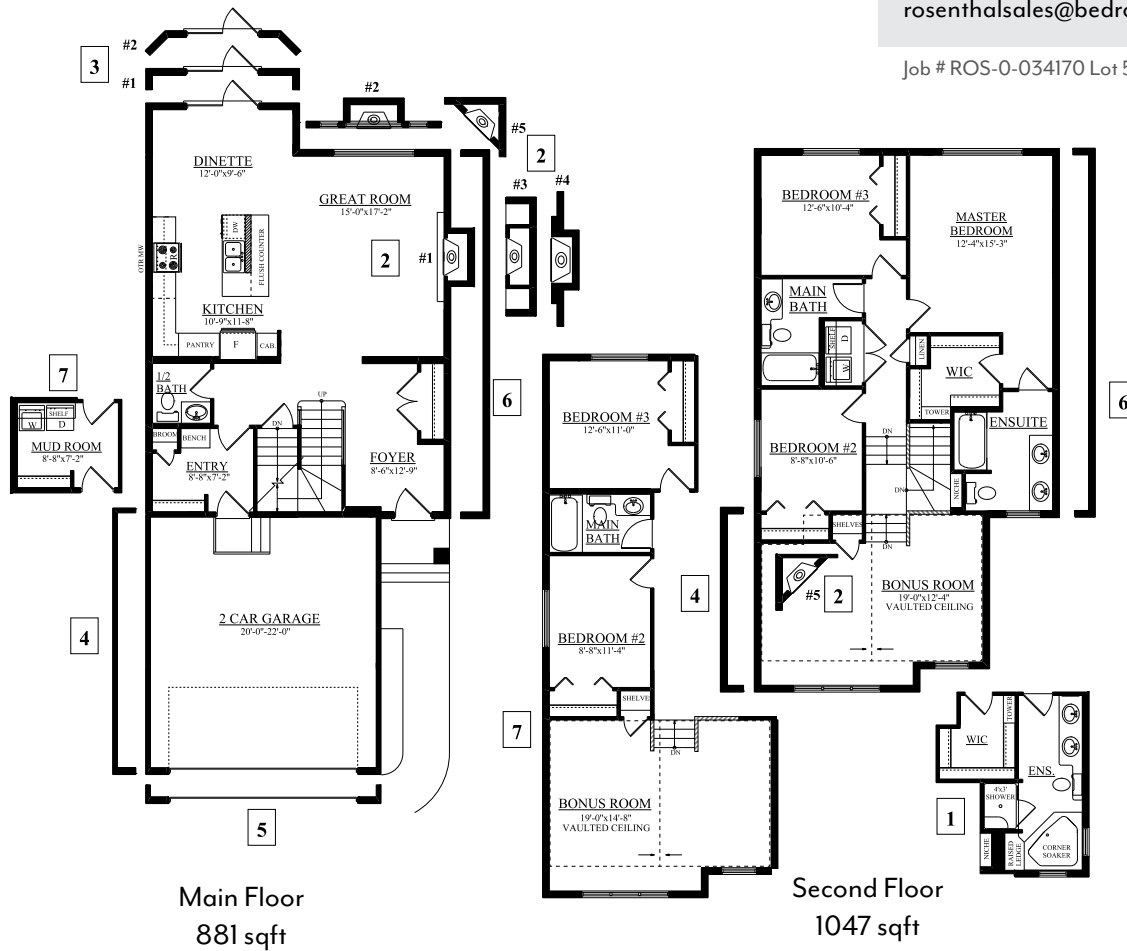
1928 SQ FT
8231-217 St. NW



Rosenthal Showhome

8236 217 Street NW, Edmonton
780.705.3765
rosenthalsales@bedrockhomes.ca

Job # ROS-0-034170 Lot 5, Block 1, Plan 122-5087



bedrockhomes.ca

VISIT US AT ANY OF OUR SHOWHOMES!
Monday - Thursday 3-8pm, Weekends & Holidays 12-5PM

